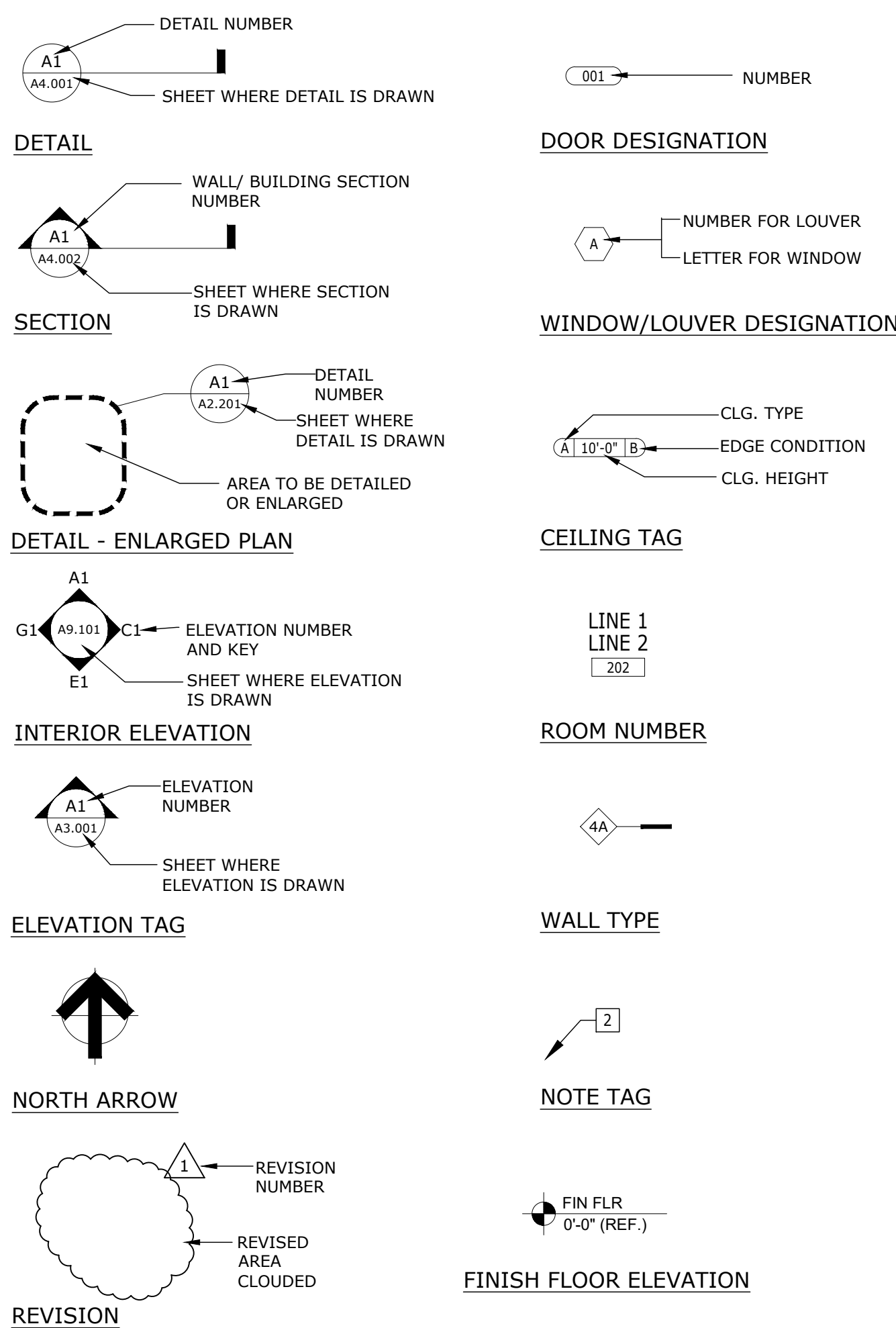
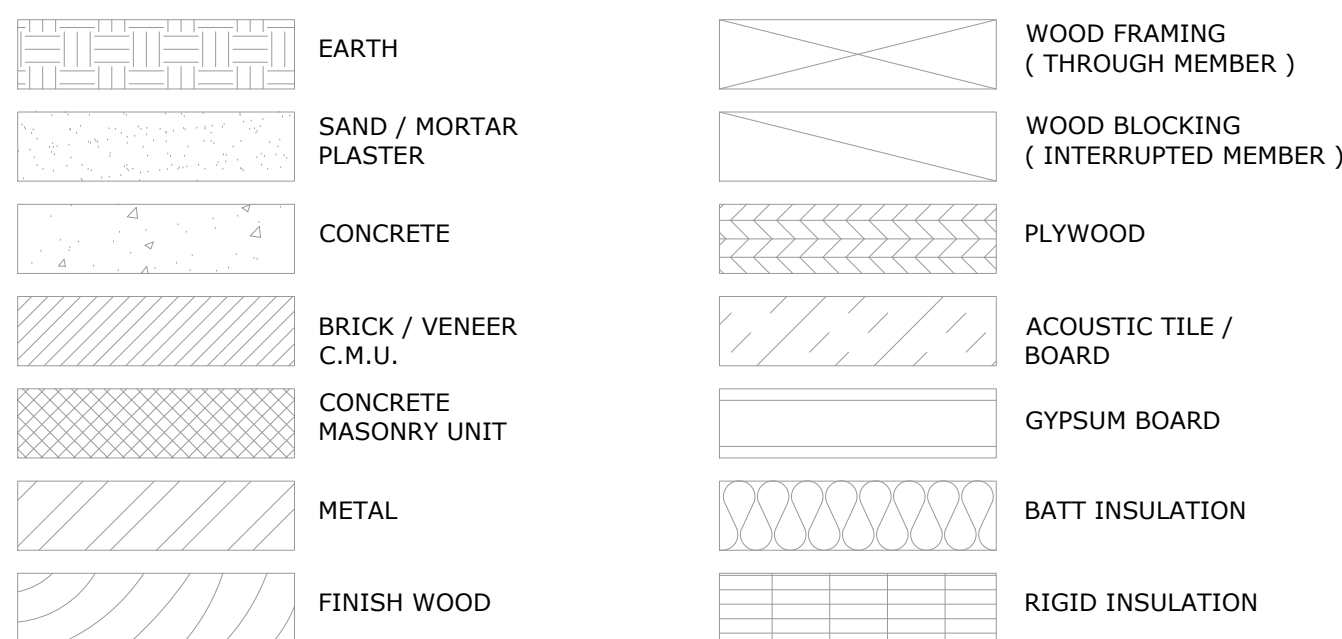


**SYMBOLS LEGEND**



**MATERIALS LEGEND**



**DIMENSIONING CONVENTIONS**

1. DIMENSIONS ARE INDICATED ON DRAWINGS; DO NOT SCALE DRAWINGS.
2. DIMENSIONS SHOWN ARE TO FACE OF STUDS, MASONRY OR CONCRETE AND ARE INDICATED WITH A DIAGONAL MARK.
3. CLEAR DIMENSIONS AND DIMENSIONS TO FACE OF FINISH ARE NOTED WITH A LEADER HEAD.
4. CENTERLINE DIMENSIONS ARE INDICATED WITH A 'CL'.
5. WALLS, PARTITIONS OR MULLIONS THAT ARE DIMENSIONED TO THE CENTERLINE ARE SHOWN WITH A DASHED LINE.
6. ELEMENTS THAT ARE CENTERED BETWEEN TWO WALLS ARE SHOWN WITH 'EQ.' SYMBOLS.
7. UNLESS NOTED OTHERWISE, DOORS ARE LOCATED 6" FROM THE CORNER IN METAL FRAMED WALLS AND 8" FROM A CORNER IN CMU WALLS.
8. DIMENSIONS TO ROUGH OPENINGS (RO) OR MASONRY OPENINGS (MO) ARE NOTED ACCORDINGLY.

**ABBREVIATIONS**

"A" AC or A/C	AIR CONDITIONING ARCHITECT / ENGINEER	"G" GA	GAUGE GALVANIZED GLASS	"Q" QUARRY TILE
A/E AFF	AIR HANDLING UNIT	GL	GRADE	"R" RISER / RADIUS
AHU	ALTERNATE ALUMINUM APPROX ARCH	GR	GYPSUM BOARD GYPSUM PLASTER	RD REF REFL REIN
ALT	ARCHITECTURE, ARCHITECTURAL	GYP BD	HOLLOW CORE HEIGHT	RO ROOF DRAIN REFERENCE REFLECTED REINFORCED, REINFORCING, REINFORCEMENT REQUIRED ROOM ROUGH OPENING
ALUM	ACOUS PNL	GYP PLAS	HOLLOW METAL DOOR HEATING, VENTILATION, AIR CONDITIONING	REINFORCED REINFORCEMENT REQUIRED ROOM ROUGH OPENING
APPROX ARCH	BLDG BLDK BLKG BOT BUR	HC HGT HM HMD HMF HVAC	"H" HOLLOW CORE HEIGHT HOLLOW METAL DOOR HOLLOW METAL FRAME HEATING, VENTILATION, AIR CONDITIONING	REINFORCED REINFORCEMENT REQUIRED ROOM ROUGH OPENING
ARCH	BLDG BLDK BLKG BOT BUR	INSUL INTR	"I" INSIDE DIAMETER INSULATION INTERIOR	REINFORCED REINFORCEMENT REQUIRED ROOM ROUGH OPENING
ARCHITECTURE, ARCHITECTURAL	BLDG BLDK BLKG BOT BUR	"J" JAN JST JT	"J" JANITOR JOIST JOINT	REINFORCED REINFORCEMENT REQUIRED ROOM ROUGH OPENING
ACOUS PNL	BLDG BLDK BLKG BOT BUR	LT LAV LT WT	"L" LAVATORY LIGHT WEIGHT	REINFORCED REINFORCEMENT REQUIRED ROOM ROUGH OPENING
BLDG BLDK BLKG BOT BUR	BLDG BLDK BLKG BOT BUR	"M" MAINT MAS MAX MECH MEZZ MFG MFR MIN MISC MO MULL	"M" MAINTENANCE MASONRY MAXIMUM MECHANICAL MEZZANINE MANUFACTURING MANUFACTURER MINIMUM MISCELLANEOUS MASONRY OPENING MULLION	REINFORCED REINFORCEMENT REQUIRED ROOM ROUGH OPENING
BLDG BLDK BLKG BOT BUR	BLDG BLDK BLKG BOT BUR	"N" NA NIC NO NRC NTS	"N" NORTH NOT APPLICABLE NOT IN CONTRACT NUMBER NOISE REDUCTION COEFFICIENT NOT TO SCALE	REINFORCED REINFORCEMENT REQUIRED ROOM ROUGH OPENING
BLDG BLDK BLKG BOT BUR	BLDG BLDK BLKG BOT BUR	"O" OA OC OD	"O" OVERALL ON CENTER OUTSIDE DIAMETER/ OUTSIDE DIMENSION OFFICE OPENING OPPOSITE HAND OPPOSITE ORIGINAL OVERHEAD	REINFORCED REINFORCEMENT REQUIRED ROOM ROUGH OPENING
BLDG BLDK BLKG BOT BUR	BLDG BLDK BLKG BOT BUR	"P" PL PLAM PLAS PLYWD PNL PR PREFAB PREFIN PRELIM PREP PT PTD PVMT	"P" PLATE PLASTIC LAMINATE PLASTER PLYWOOD PANEL PAIR PREFABRICATED PREFINISHED PRELIMINARY PREPARATION PRESERVATIVE TREATED PAINTED PAVEMENT	REINFORCED REINFORCEMENT REQUIRED ROOM ROUGH OPENING
BLDG BLDK BLKG BOT BUR	BLDG BLDK BLKG BOT BUR	"Q" QUARRY TILE	"Q" QUARRY TILE	REINFORCED REINFORCEMENT REQUIRED ROOM ROUGH OPENING
BLDG BLDK BLKG BOT BUR	BLDG BLDK BLKG BOT BUR	"R" RISER / RADIUS	"R" RISER / RADIUS	REINFORCED REINFORCEMENT REQUIRED ROOM ROUGH OPENING
BLDG BLDK BLKG BOT BUR	BLDG BLDK BLKG BOT BUR	RD REF REFL REIN	RD REF REFL REIN	REINFORCED REINFORCEMENT REQUIRED ROOM ROUGH OPENING
BLDG BLDK BLKG BOT BUR	BLDG BLDK BLKG BOT BUR	REINFORCED REINFORCEMENT REQUIRED ROOM ROUGH OPENING	REINFORCED REINFORCEMENT REQUIRED ROOM ROUGH OPENING	REINFORCED REINFORCEMENT REQUIRED ROOM ROUGH OPENING

**GENERAL NOTES**

1. THESE DRAWINGS HAVE BEEN PREPARED TO THE BEST OF OUR ABILITY TO BE IN COMPLIANCE AND CONFORMANCE WITH THE FEDERAL ACCESSIBILITY LAW CONTAINED WITHIN THE AMERICANS WITH DISABILITIES ACT GUIDELINES FOR DESIGN.
2. THE DESIGN AND DRAWINGS OF THIS PROJECT HAVE BEEN SPECIFICALLY PREPARED FOR THE USE AND CONSTRUCTION AT THE LOCATION SHOWN. REPRODUCTION FOR USE IN ANY OTHER SITE OR MANNER EXCEEDS THE INTENDED PURPOSE OF THESE DOCUMENTS AND IS PROHIBITED.
3. CONTRACTOR SHALL VERIFY THE LOCATION OF ALL EXISTING UTILITIES BELOW GRADE AND RELATED SERVICE CONNECTIONS WITH THE RESPECTIVE UTILITY COMPANIES. CONTRACTOR SHALL COORDINATE THE REMOVAL, ABANDONMENT OR RELOCATION OF EXISTING UTILITIES SHOWN ON THESE DOCUMENTS WITH RESPECTIVE UTILITY COMPANIES. ANY INTERRUPTIONS IN EXISTING UTILITY SERVICES NEEDS TO BE COORDINATED AND APPROVED BY THE UTILITY COMPANY PRIOR TO START OF WORK.
4. CONTRACTOR SHALL PERFORM ALL WORK WITHIN PUBLIC RIGHTS OF WAY ACCORDING TO THESE DOCUMENTS AND REQUIREMENTS BY THE GOVERNING AGENCY AND SHALL OBTAIN NECESSARY APPROVALS AS REQUIRED.
5. ARCHITECT SHALL BE NOTIFIED BY CONTRACTOR OF ANY DISCREPANCIES ON THESE DOCUMENTS PRIOR TO COMMENCEMENT OF WORK.
6. CONTRACTOR SHALL FIELD VERIFY AND COORDINATE ALL NEW AND EXISTING CONDITIONS AND DIMENSIONS FOR COMPARISON TO THE DOCUMENTS PRIOR TO BIDDING AND THE COMMENCEMENT OF CONSTRUCTION. NOTIFY ARCHITECT IN WRITING OF ANY DISCREPANCIES, INCONSISTENCIES OR OMISSIONS BEFORE THE COMMENCEMENT OF WORK.
7. ALL CONSULTANT DRAWINGS SHALL BE CONSIDERED COMPLIMENTARY TO THE ARCHITECT'S DOCUMENTS. IT IS THE CONTRACTOR'S RESPONSIBILITY TO COORDINATE THE CONSULTANT DRAWINGS AND NOTIFY THE ARCHITECT IN WRITING OF ANY DISCREPANCIES, INCONSISTENCIES OR OMISSIONS BEFORE THE COMMENCEMENT OF WORK.
8. DO NOT SCALE THESE DRAWINGS. CONTRACTOR SHALL RELY ON THE DIMENSIONS SHOWN AND SHALL FIELD VERIFY ALL DIMENSIONS AND COORDINATE THE WORK WITH ALL TRADES. NOTIFY THE ARCHITECT IN WRITING OF ANY DISCREPANCIES, INCONSISTENCIES OR OMISSIONS BEFORE THE COMMENCEMENT OF WORK.

**CODE SUMMARY**

APPLICABLE CODES	EDITION
FLORIDA BUILDING CODE	EDITION: 2017
FLORIDA BUILDING CODE - EXISTING BUILDING	EDITION: 2017
FLORIDA BUILDING CODE - PLUMBING	EDITION: 2017
FLORIDA BUILDING CODE - ELECTRICAL	EDITION: 2017
FLORIDA BUILDING CODE - ENERGY CONSERVATION	EDITION: 2017
FLORIDA BUILDING CODE - MECHANICAL	EDITION: 2017
NATIONAL ELECTRICAL CODE - NFPA 70	EDITION: 2014
FLORIDA FIRE PREVENTION CODE	EDITION: 6TH EDITION
*NFPA-1 & NFPA-101	EDITION: 2015

**PROJECT INFORMATION**

<b>SCOPE OF PROJECT:</b> NEW PRINT SHOP BUILDING			
SQUARE FOOTAGE OF BUILDING:	7,557 SF		
OCCUPANCY CLASSIFICATION: BUSINESS (B)			
OCCUPANCY USE:	SQUARE FOOTAGE:	OCCUPANTS / SF:	TOTAL OCCUPANTS:
BUSINESS (B)	7,557 SF	1 / 100 GROSS	76 OCCUPANTS

**CONSTRUCTION**

CONSTRUCTION TYPE:	FBC: VB	NFPA: V (000)	BUILDING HEIGHT:	ALLOWABLE	PROPOSED
FIRE RATINGS:			NUMBER OF STORIES (S):	40'	25'-8"
STRUCTURAL FRAME:	0 HR			2	1
BEARING WALLS (INT/EXT):	0 HR				
NONBEARING WALLS:	0 HR				
FLOOR CONSTRUCTION:	0 HR				
ROOF CONSTRUCTION:	0 HR				
SPRINKLERED:	NO				
PROTECTED:	UNPROTECTED				
INTERIOR FINISHES:	EXITS - CLASS A				
	EXIT ACCESS - CLASS B				
	OTHER SPACES - CLASS C				

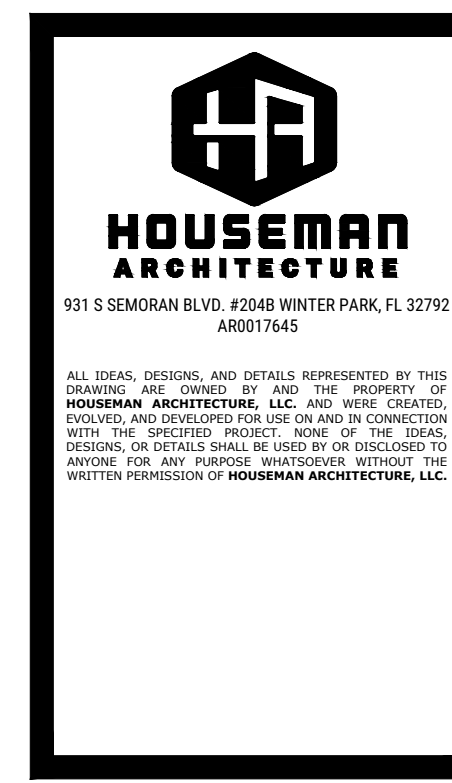
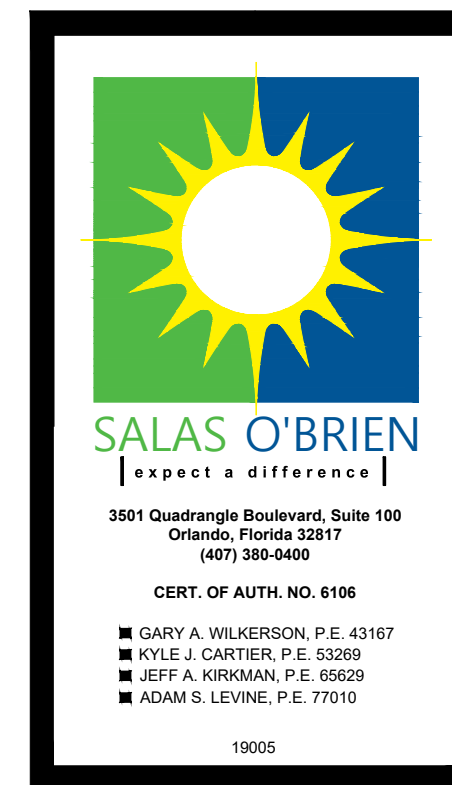
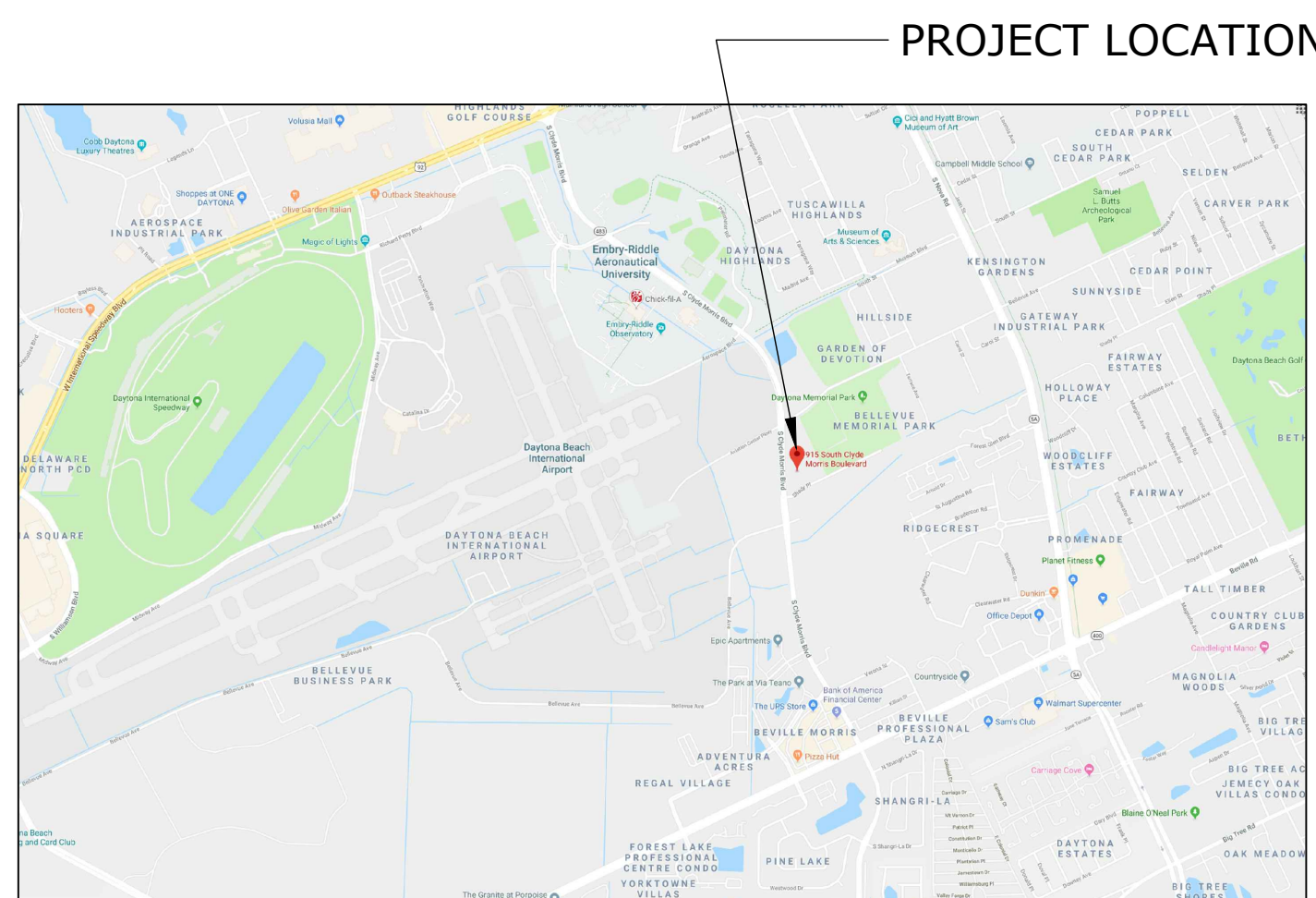
**EXITS**

	ALLOWABLE	ACTUAL	ALLOWABLE	ACTUAL
MINIMUM NUMBER OF EXITS:	2	4	MAXIMUM TRAVEL DISTANCE:	200 FT. 74 FT.
MAX. DEAD END CORRIDOR:	20 FT.	8'-5"	MINIMUM CORRIDOR WIDTH:	44 IN. 72 IN.
			MAXIMUM COMMON PATH OF TRAVEL:	75 FT. 31 FT.

**PLUMBING CALCULATIONS**

OCCUPANTS:	76 OCCUPANTS
PLUMBING FACTORS:	UTILIZING BUSINESS OCCUPANCY WC: 1/50 THEN 1/50 LAV: 1/40 / 80
REQUIRED:	MEN 2 WC & 1 LAV WOMEN 2 WC & 1 LAV 1 DRINKING FOUNTAIN 1 SERVICE SINK
PROVIDED:	MEN 2 WC & 2 LAV WOMEN 2 WC & 2 LAV 2 DRINKING FOUNTAINS 1 SERVICE SINK

**VICINITY MAP**



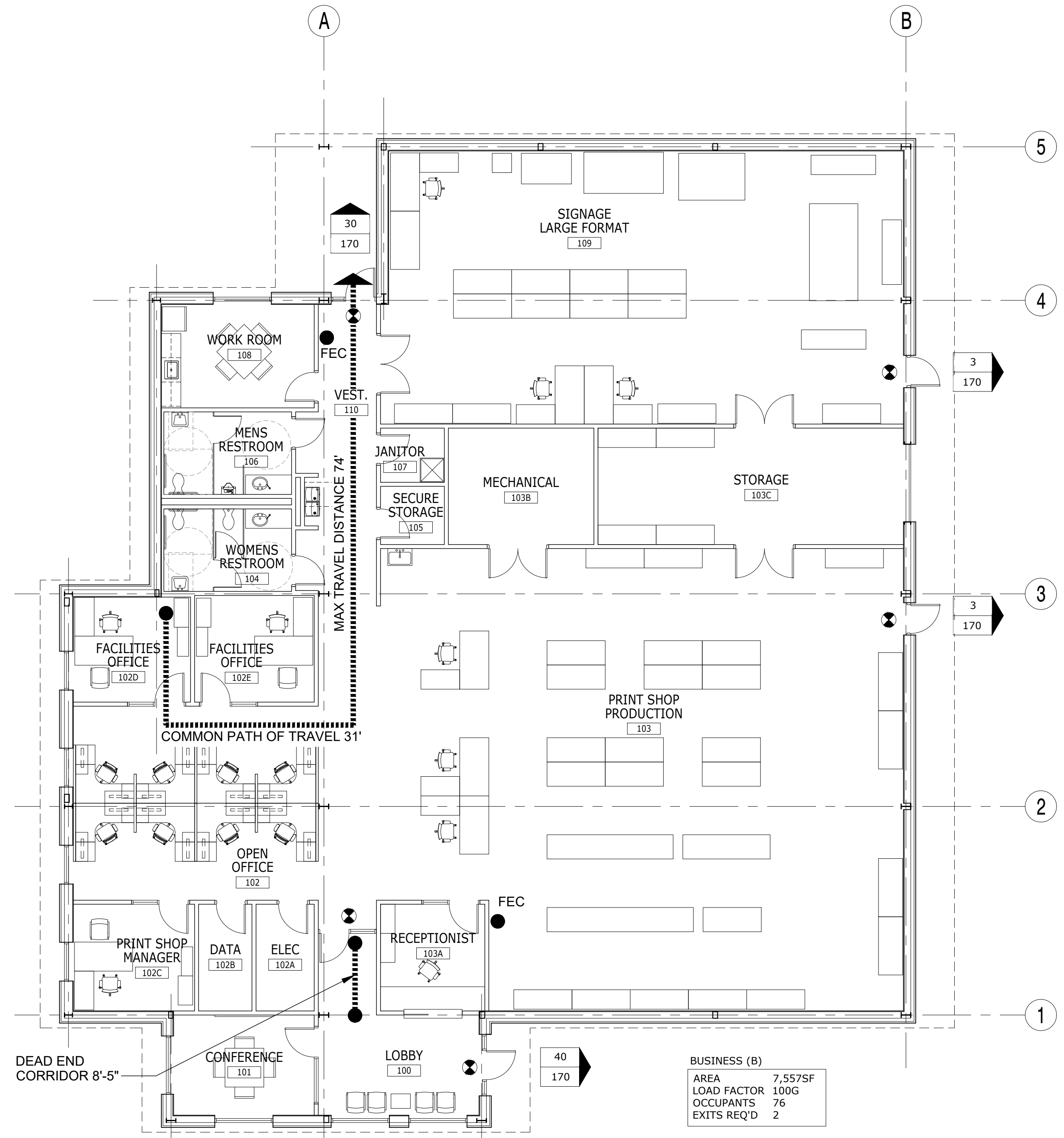
DATE	REVISION	CHECKED	DRAWN

**GENERAL INFORMATION & CODE SUMMARY**

EMBRY-RIDDLE AERONAUTICAL UNIVERSITY  
 NEW PRINT SHOP BUILDING

DATE: 08/07/2019  
 Job no. 18-042  
 Sheet no. G0.001

ISSUE FOR BID - 8/7/2019



**BUSINESS (B)**  
 AREA 7,557SF  
 LOAD FACTOR 100G  
 OCCUPANTS 76  
 EXITS REQ'D 2

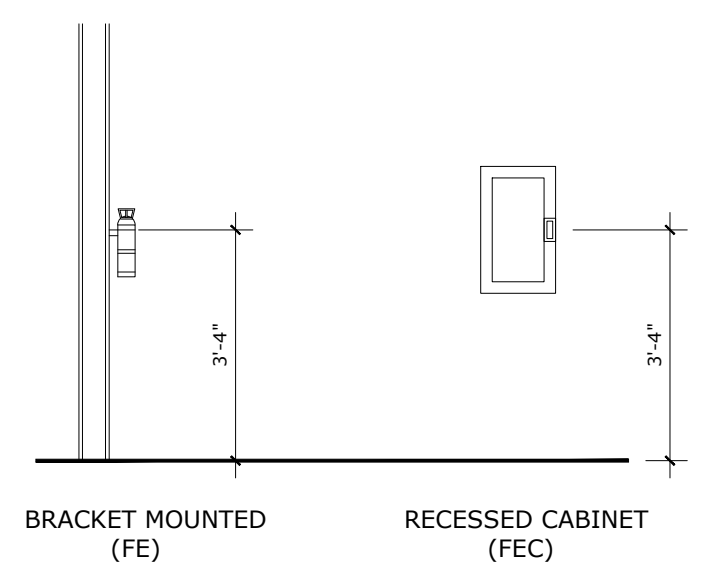
**1 LIFE SAFETY PLAN**  
 1/8" = 1'-0"

**LIFE SAFETY PLAN SUMMARY**

TOTAL SQUARE FEET: 7,557 SF		TOTAL OCCUPANTS: 76	
EXITING REQUIREMENT	REQUIRED	ACTUAL	REMARKS
BUILDING EXITS	2	4	
EXIT CORRIDOR WIDTH	44"	72"	SEE NOTE #1
EXIT DOOR WIDTH	68"	136"	SEE NOTE #2
TRAVEL DISTANCE	200' MAX	74'	
COMMON PATH OF TRAVEL	75' MAX	31'	
DEAD END CORRIDOR	20' MAX	8'-5"	

- NOTES:**  
 1. 7,557 TOTAL SQUARE FEET  
 76 OCCUPANTS (SEE SHEET G0.001)  
 76 OCCUPANTS x 0.2"/OCC = 15.2" MIN. EGRESS CAPACITY REQUIRED  
 44" REQUIRED BY CODE  
 2. 2 EXITS REQUIRED (> 50 OCCUPANTS) @ 34" X 2 = 68"  
 FOUR 36" EXIT DOORS @ 34" CLEAR = 136" DOOR WIDTH

**FIRE EXTINGUISHER DETAILS**



**NOTE:**  
 PROVIDE UL RATED FIRE EXTINGUISHERS  
 MULTI-PURPOSE USE 4-A:80B-C, 10 POUND

**LIFE SAFETY PLAN NOTES**

- TO THE BEST OF THE ARCHITECT'S KNOWLEDGE, THE DOCUMENTS COMPLY WITH THE APPLICABLE MINIMUM BUILDING CODES AND THE APPLICABLE MINIMUM FIRE SAFETY CODES AS DETERMINED BY THE LOCAL AUTHORITY HAVING JURISDICTION.
- THESE DOCUMENTS HAVE BEEN PREPARED TO THE BEST OF OUR ABILITY TO BE IN COMPLIANCE AND CONFORMANCE WITH THE FEDERAL ACCESSIBILITY LAW CONTAINED WITHIN THE AMERICANS WITH DISABILITIES ACT GUIDELINES FOR DESIGN.
- CONTRACTOR TO COORDINATE ALL EXIT SIGNS SHOWN ON THE LIFE SAFETY PLANS WITH ELECTRICAL DRAWINGS. REFER TO ELECTRICAL DRAWINGS FOR SIGN DIRECTION, MOUNTING, CIRCUITING AND FIXTURE TYPES.
- FURNITURE IS SHOWN ON THE PLANS FOR GENERAL REFERENCE ONLY. OWNER WILL VERIFY 44" MIN CLEARANCE AROUND ALL MOVABLE FURNITURE ELEMENTS.
- CONTRACTOR TO COORDINATE WITH THE AHJ ON THE PREFERRED LOCATION/MOUNTING FOR THE KNOX BOX. SEE SPECIFICATIONS FOR KNOX BOX.

**LIFE SAFETY PLAN LEGEND**

- WALL RATING DESIGNATION**  
 NO RATED WALLS REQUIRED
- TRAVEL DISTANCE**  
 # TRAVEL DISTANCE (FT.)  
 # COMMON PATH OF TRAVEL (FT.)
- EXITING / OCCUPANT LOAD TAG**  
 X X = OCCUPANTS USING EXIT  
 Y Y = EXIT CAPACITY
- LIFE SAFETY SYMBOLS**  
 EXIT SIGN  
 FE FIRE EXTINGUISHER  
 FEC FIRE EXTINGUISHER CABINET  
 FAAP FIRE ALARM ANNUNCIATION PANEL

REVISION	DATE	DRAWN	CHECKED

ISSUE FOR BID - 8/7/2019

**LIFE SAFETY PLAN**

EMBRY-RIDDLE AERONAUTICAL UNIVERSITY  
 NEW PRINT SHOP BUILDING

Date: 08/07/2019  
 Job no. 18-042  
 Sheet no.

**G1.101**

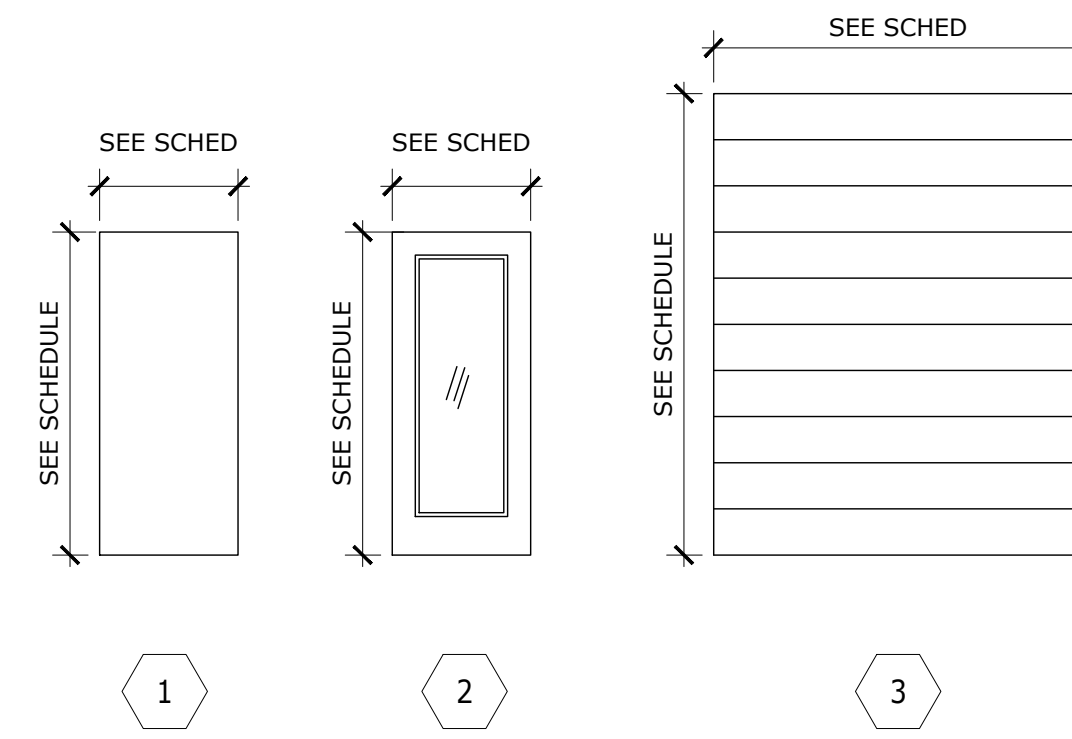
**GENERAL NOTES**

- ALL HARDWARE TO MEET APPLICABLE LOCAL, STATE AND FEDERAL CODES.
- CONTRACTOR TO PREP DOORS AS NECESSARY TO RECEIVE SPECIFIED HARDWARE.
- ALL HOLLOW METAL FRAMES TO BE PAINTED TO MATCH ADJACENT WALL COLOR (UON).
- ALL HOLLOW METAL FRAMES SHALL BE WELDED CONSTRUCTION; 'KNOCK-DOWN' FRAMES ARE NOT ACCEPTABLE.
- ALL EXTERIOR GLASS TO BE INSULATED, TINTED & TEMPERED. ALL INTERIOR GLASS TO BE 1/4" CLEAR TEMPERED.
- EXTERIOR GLAZING PERFORMANCE TO BE:  
U-VALUE .5 MAX  
SHGC .25 MAX

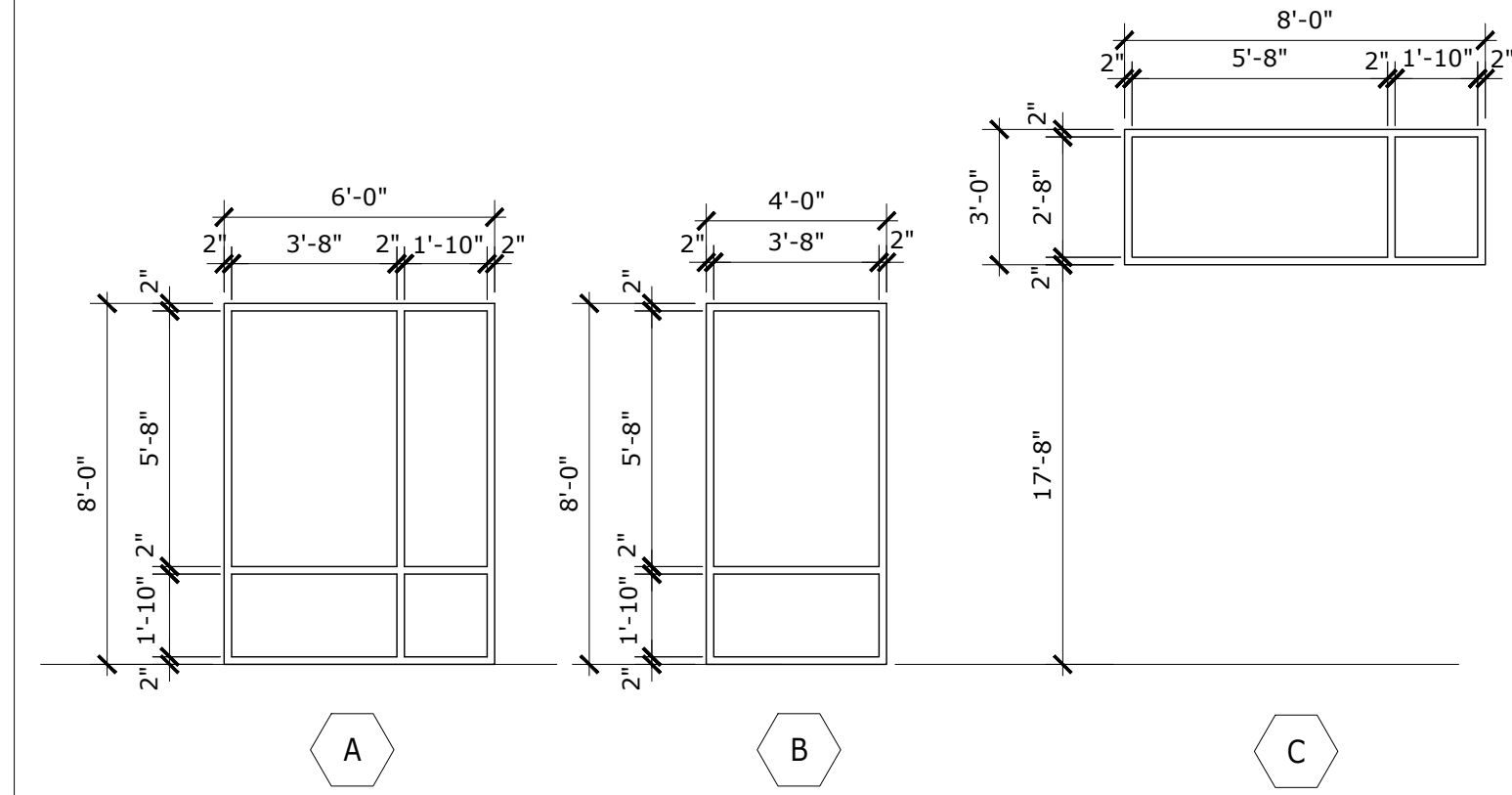
**SCHEDULE KEYNOTES**

- WEATHER STRIPPING AROUND DOOR
- PROVIDE SOUND SEALS
- TEMPERED GLASS - CLEAR
- TEMPERED GLASS - TINTED
- CARD KEY ACCESS HARDWARE- COORD W/ ELEC DWGS
- TAMPERPROOF HARDWARE
- 12" STAINLESS STEEL KICKPLATE
- SELF-CLOSING HARDWARE
- UNDER-CUT DOOR 3/4"
- 180 DEGREE DOOR SWING
- DOOR STOP
- DOOR VIEWER

**DOOR TYPES**



**WINDOW TYPES**

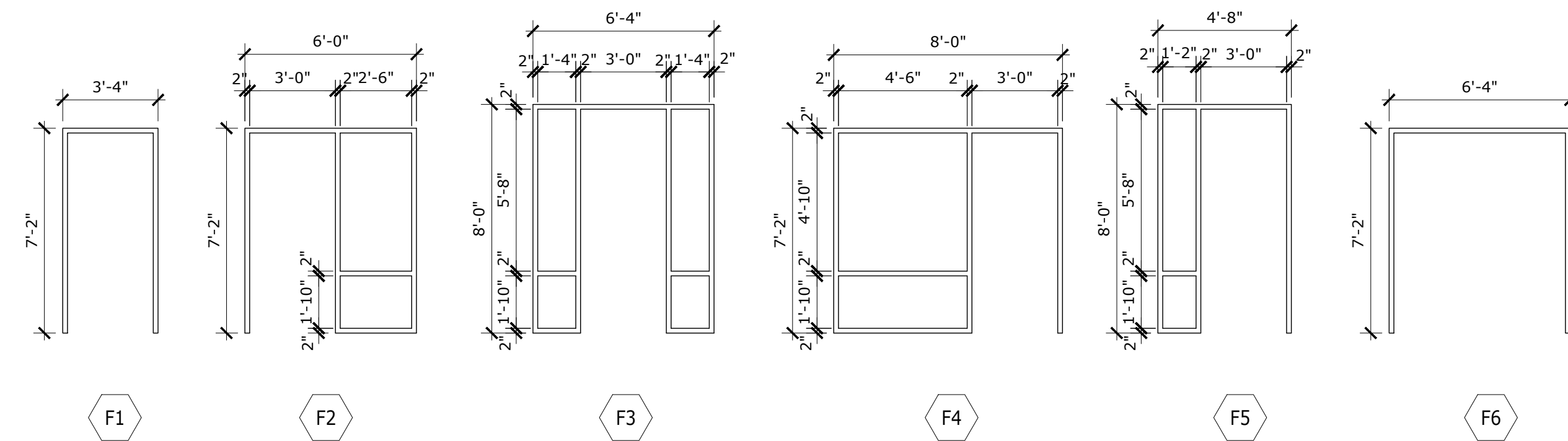


**DOOR SCHEDULE**

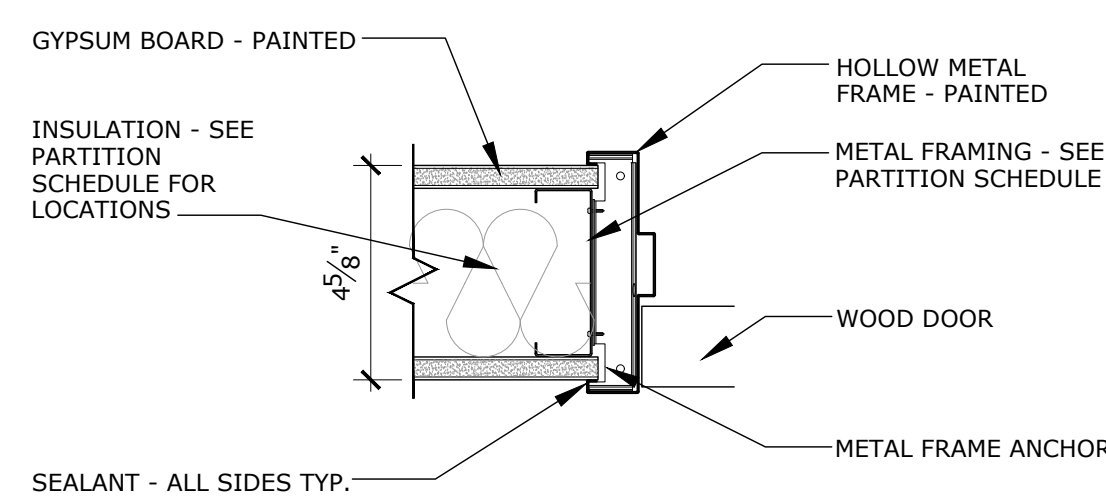
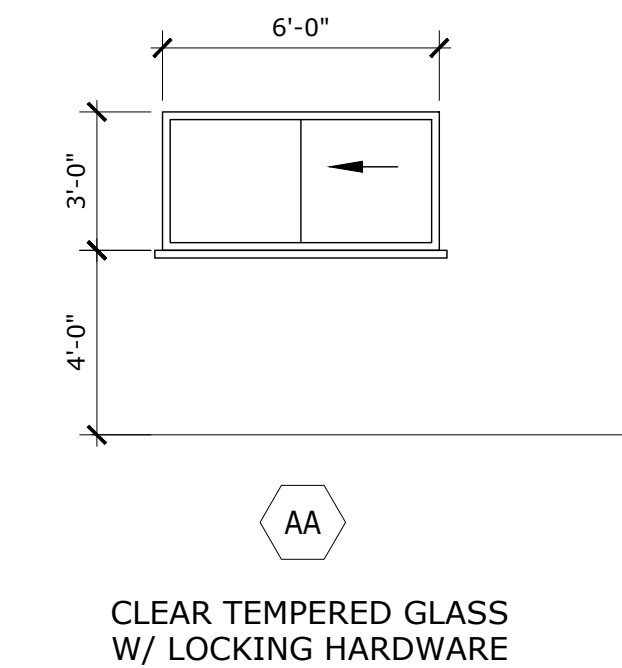
NO.	DOOR			TYPE	FRAME			HWD NO.	DETAILS			KEY NOTES	
	WIDTH	HEIGHT	THICKNESS		MAT'L	TYPE	MAT'L		RATING	HEAD	SILL		JAMB
100A	3'-0"	7'-10"	1-3/4"	2	ALUM	F3	ALUM	---	1			1, 4, 5, 6, 8	
100B	3'-0"	7'-0"	1-3/4"	1	WD	F2	HM	---	12	2/G2.101	---	1/G2.101	3, 5, 7, 8, 11
101	3'-0"	7'-0"	1-3/4"	1	WD	F4	HM	---	8	2/G2.101	---	1/G2.101	2, 11
102A	3'-0"	7'-0"	1-3/4"	1	WD	F1	HM	---	13	2/G2.101	---	1/G2.101	2, 11
102B	3'-0"	7'-0"	1-3/4"	1	WD	F1	HM	---	13	2/G2.101	---	1/G2.101	2, 11
102C	3'-0"	7'-0"	1-3/4"	1	WD	F2	HM	---	10	2/G2.101	---	1/G2.101	11
102D	3'-0"	7'-0"	1-3/4"	1	WD	F2	HM	---	10	2/G2.101	---	1/G2.101	11
102E	3'-0"	7'-0"	1-3/4"	1	WD	F2	HM	---	10	2/G2.101	---	1/G2.101	11
103A	3'-0"	7'-0"	1-3/4"	1	WD	F1	HM	---	11	2/G2.101	---	1/G2.101	2, 11
103B	PR3'-0"	7'-0"	1-3/4"	1	WD	F6	HM	---	6	2/G2.101	---	1/G2.101	2, 7, 10, 11
103C	PR3'-0"	7'-0"	1-3/4"	1	WD	F6	HM	---	5	2/G2.101	---	1/G2.101	7, 10, 11
103D	3'-0"	7'-0"	1-3/4"	1	HM	F1	HM	---	2				1, 5, 6, 8, 12
103E	8'-0"	10'-0"	---	3	STL	STL	---	---	4				
104	3'-0"	7'-0"	1-3/4"	1	WD	F1	HM	---	14	2/G2.101	---	1/G2.101	7, 8, 9, 11
105	3'-0"	7'-0"	1-3/4"	1	WD	F1	HM	---	12	2/G2.101	---	1/G2.101	7, 9, 11
106	3'-0"	7'-0"	1-3/4"	1	WD	F1	HM	---	14	2/G2.101	---	1/G2.101	7, 8, 9, 11
107	3'-0"	7'-0"	1-3/4"	1	WD	F1	HM	---	12	2/G2.101	---	1/G2.101	7, 9, 11
108	3'-0"	7'-0"	1-3/4"	1	WD	F1	HM	---	9	2/G2.101	---	1/G2.101	7, 11
109A	PR3'-0"	7'-0"	1-3/4"	1	WD	F6	HM	---	7	2/G2.101	---	1/G2.101	2, 7, 11
109B	PR3'-0"	7'-0"	1-3/4"	1	WD	F6	HM	---	5	2/G2.101	---	1/G2.101	7, 10, 11
109C	3'-0"	7'-0"	1-3/4"	1	HM	F1	HM	---	2				1, 5, 6, 8, 12
110	3'-0"	7'-10"	1-3/4"	2	ALUM	F5	ALUM	---	3				1, 4, 5, 6, 8

DOOR SCHEDULE NOTES:  
1. REFERENCE PROJECT MANUAL FOR DOOR HARDWARE SETS AND SPECIFICATIONS.

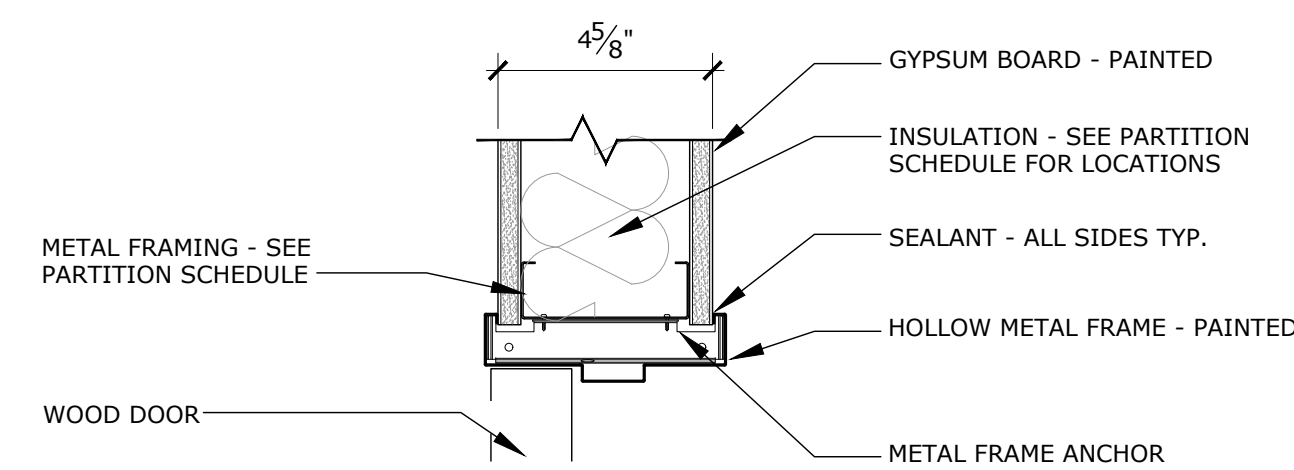
**DOOR FRAME TYPES**



**OPERABLE WINDOW**



**1 HM DOOR DETAIL - JAMB TYP.**  
3" = 1'-0"



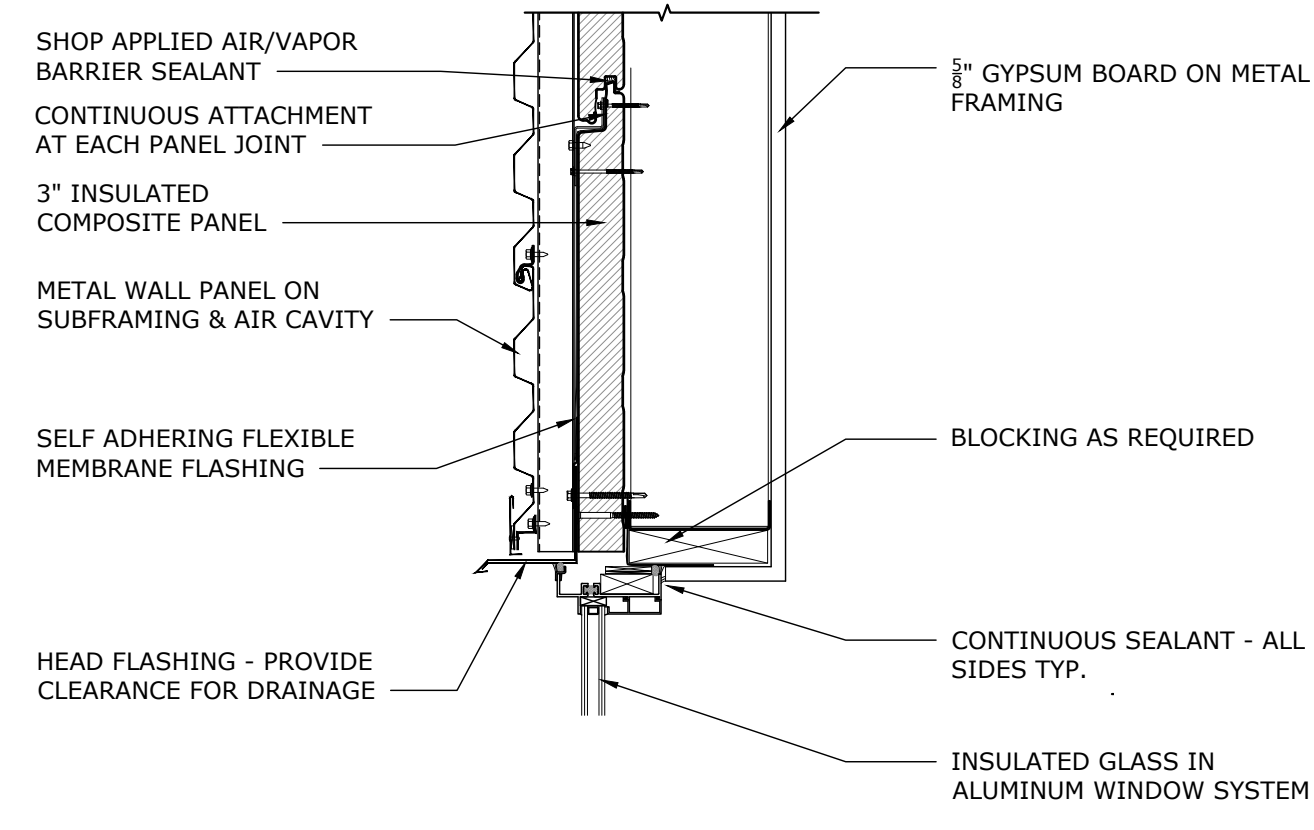
**2 HM DOOR DETAIL - HEAD TYP.**  
3" = 1'-0"

REVISION	DATE	DRAWN	CHECKED

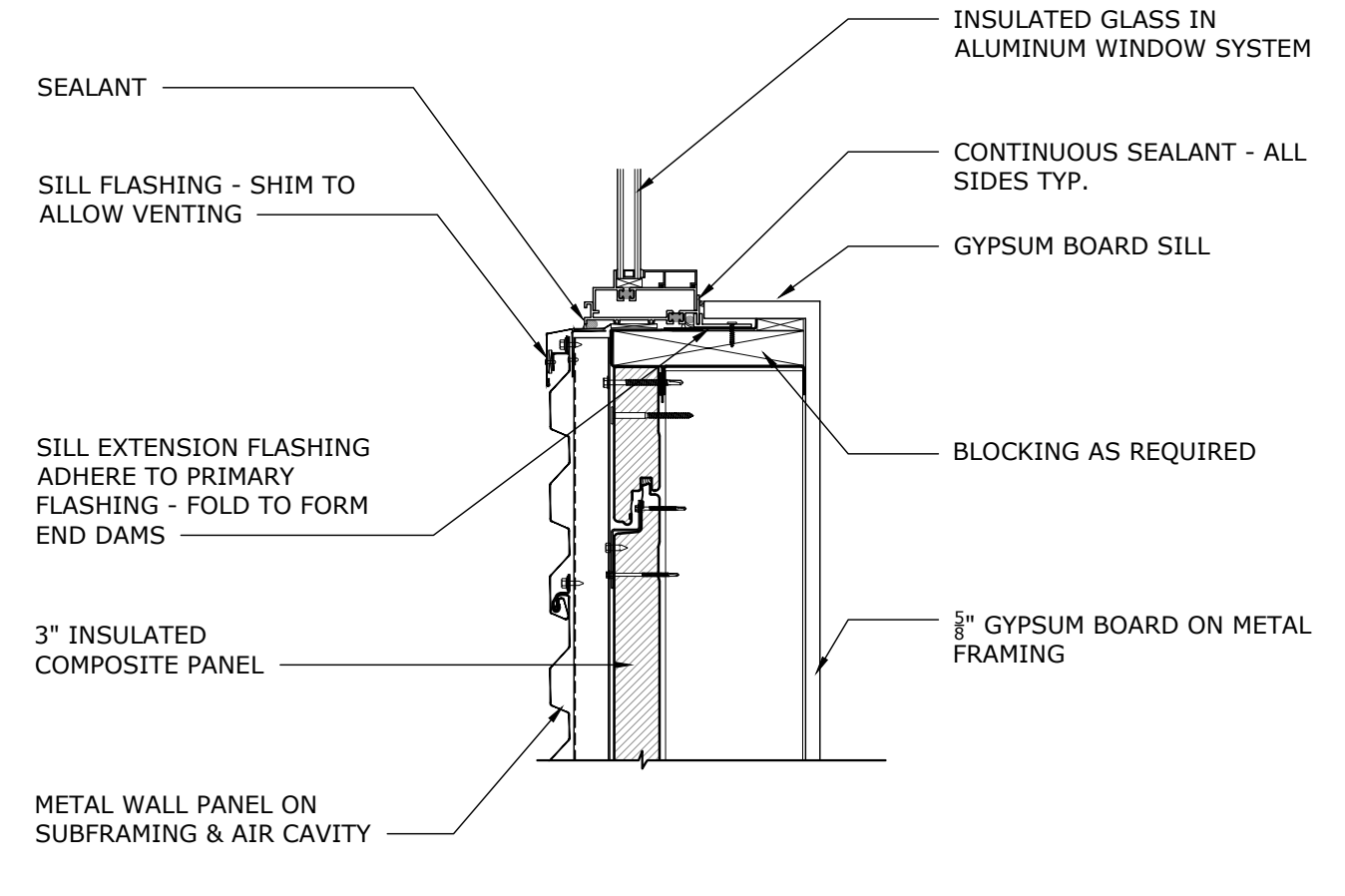
ISSUE FOR BID - 8/7/2019

DOOR SCHEDULE, TYPES & DETAILS  
EMBRY-RIDDLE AERONAUTICAL UNIVERSITY  
NEW PRINT SHOP BUILDING

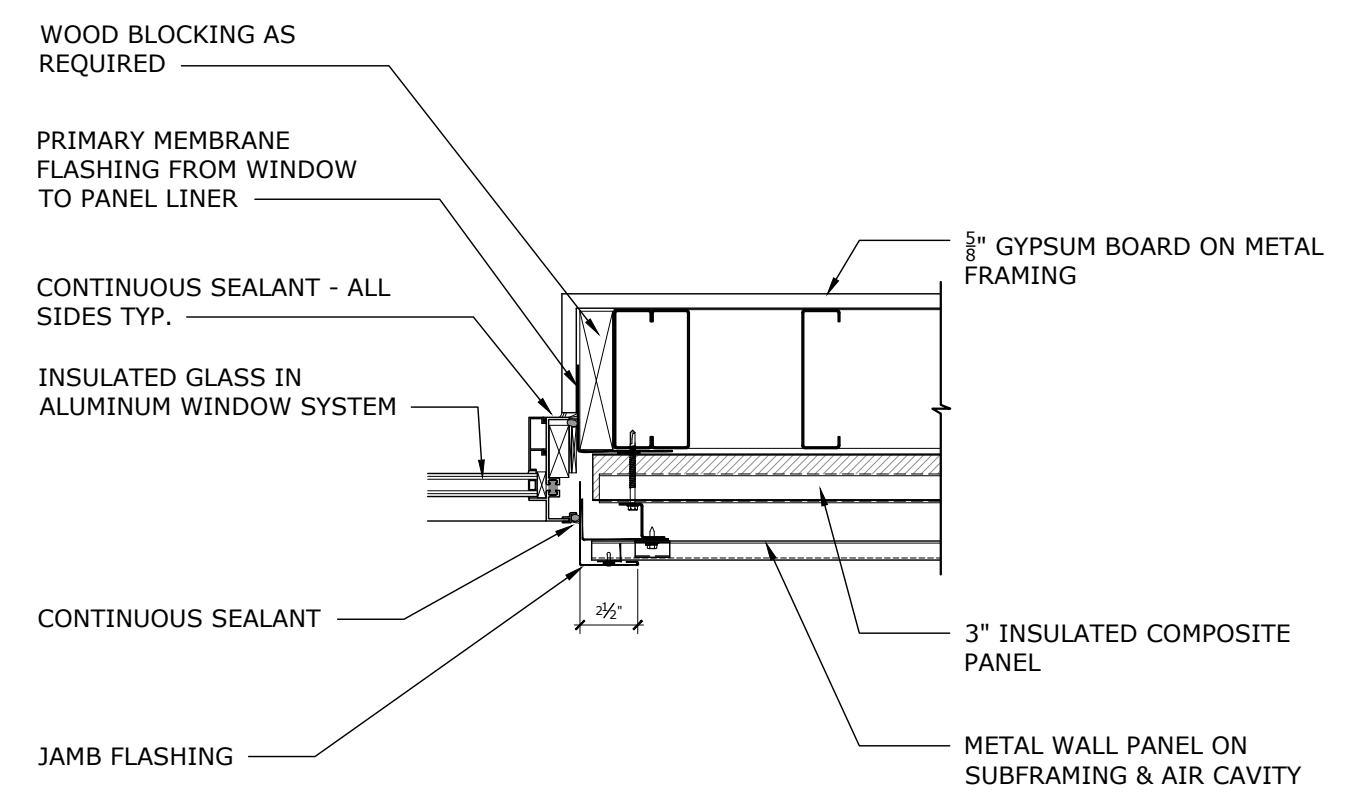
Date: 08/07/2019  
Job no. 18-042  
Sheet no. G2.101



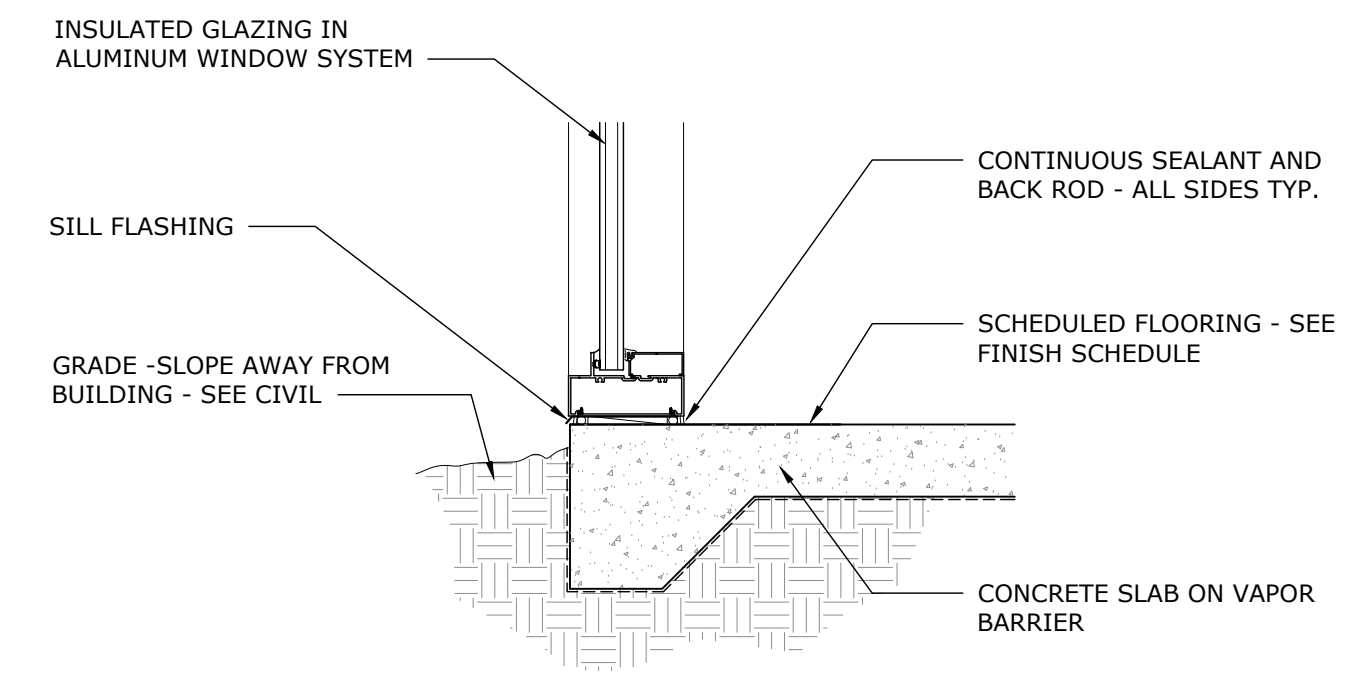
**1 WINDOW HEAD DETAIL**  
1-1/2" = 1'-0"



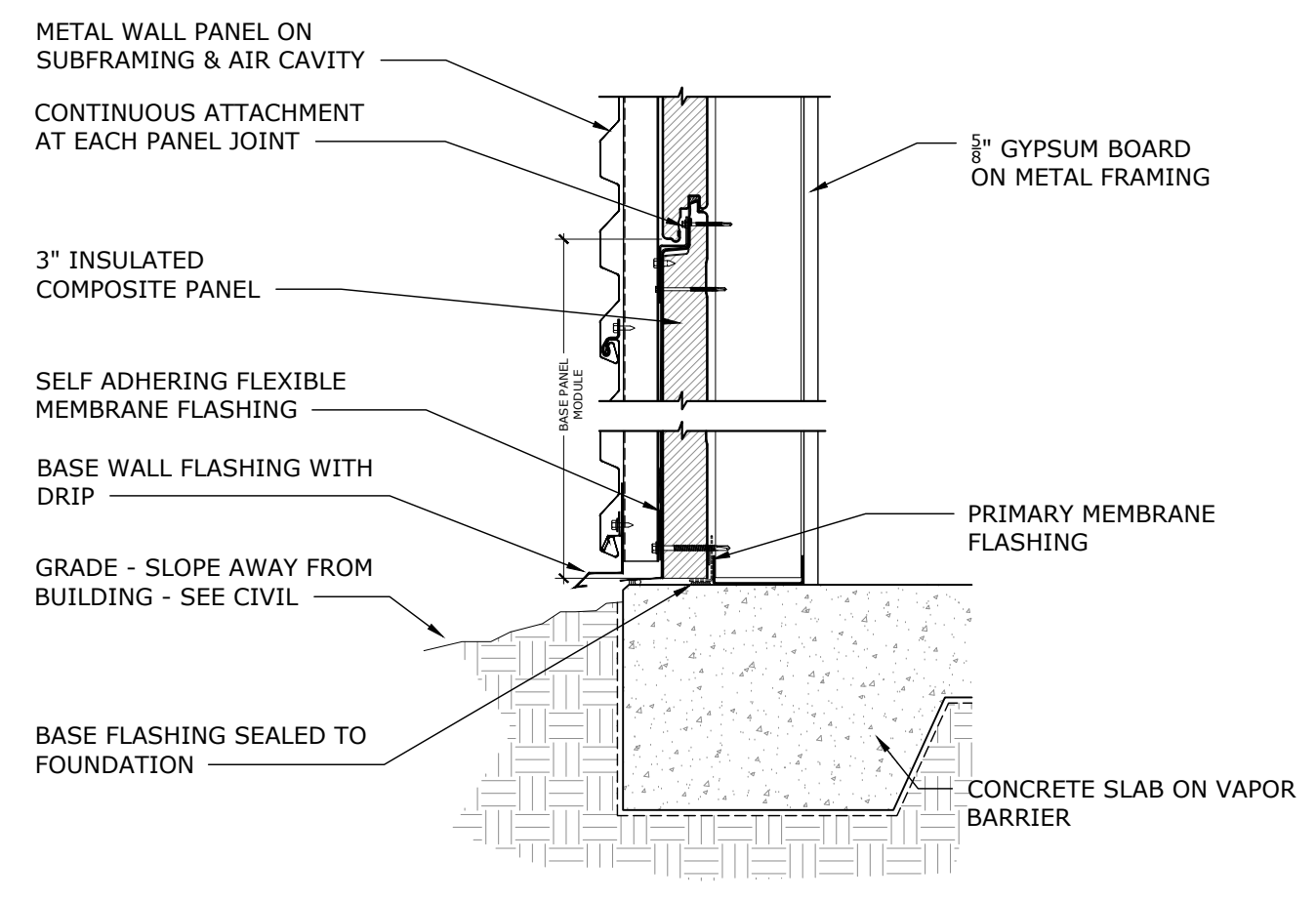
**2 WINDOW SILL DETAIL**  
1-1/2" = 1'-0"



**3 WINDOW JAMB DETAIL**  
1-1/2" = 1'-0"



**4 WINDOW SILL DETAIL**  
1-1/2" = 1'-0"



**5 BASE OF WALL DETAIL**  
1-1/2" = 1'-0"

REVISION	DATE	CHECKED

**ISSUE FOR BID - 8/7/2019**

**DOOR & WINDOW DETAILS**

EMBRY-RIDDLE AERONAUTICAL UNIVERSITY  
NEW PRINT SHOP BUILDING

Date: 08/07/2019  
Job no. 18-042  
Sheet no. G2.102